

Brown and Caldwell is using ProjectWise to manage project documents. This document outlines the method to use AutoCAD with ProjectWise that provides simplicity, consistency, efficiency and scalability to assisting in sharing work between different locations. Adherence to the workflow described below will help you be successful in delivering your projects on budget and on time

Summary

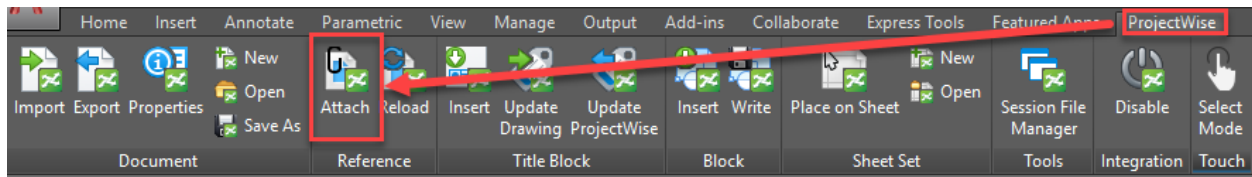
This document will cover best Practices for AutoCAD XREF with ProjectWise Integration.

AutoCAD with ProjectWise Integration provides opening references and editing references in place. Both in which allow you to edit the references by selection them from inside of the master DWG file from ProjectWise or outside of ProjectWise.

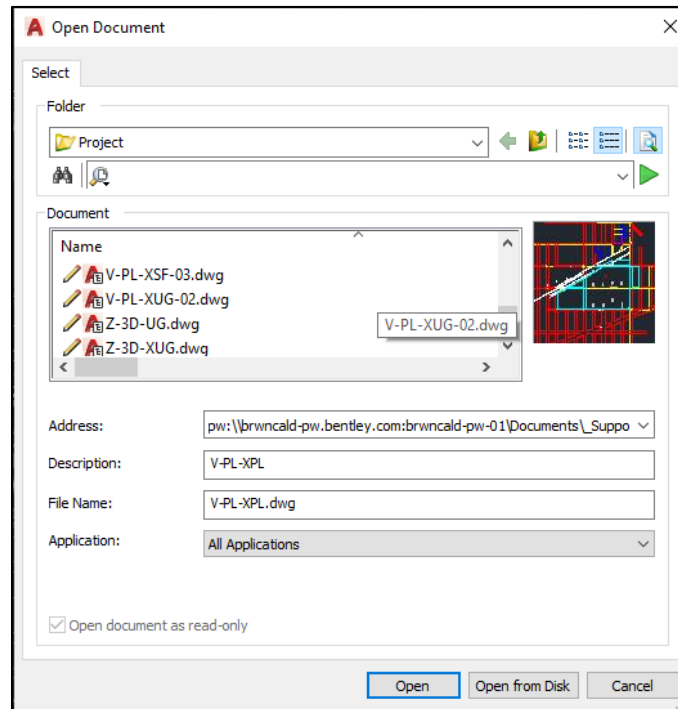
Please note AutoCAD Profiles are setup with ARG files in ProjectWise and the rest of the profile data will be hosted on the DFS Storage.

Attaching a Reference

1. In the ProjectWise Ribbon, Under the Reference section click on Attach.

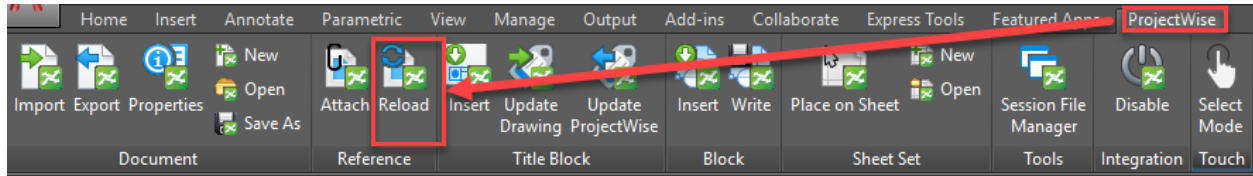


2. Open Document section opens and navigate to the file that needs to be attached. If you select Open from disk it will look locally and open from machine. Select the file and click on Open.
3. Now the file is attached to the file that is being worked on.



Reloading a Reference

If a reference is changed a simple click of the Reload button will reload the reference and any updates that have been done in ProjectWise.



Still having trouble?

Internal Users: Create a ticket from the [BC Help Desk](#). Select "Design Technology" as the queue and "ProjectWise" as the category to ensure fastest routing of your request.

External Users: Contact your Project Manager